

# Class A vs. B Global Adjustment Review

<Facility Name>

May 2017 – April 2018

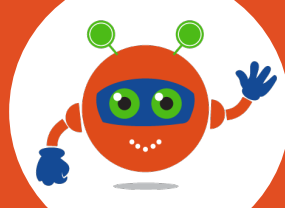
&

May 2018 – April 2019

Date: August 2019

Revision: 0

<Address>



## 2017/2018 Summary

### Class B Global Adjustment (2017/2018)

<Client> consumed **4,382,643 kWh** from May 2017 to April 2018. Applying the Class B rates for each month, the annual Class B cost for <Client> would be **\$447,627**.

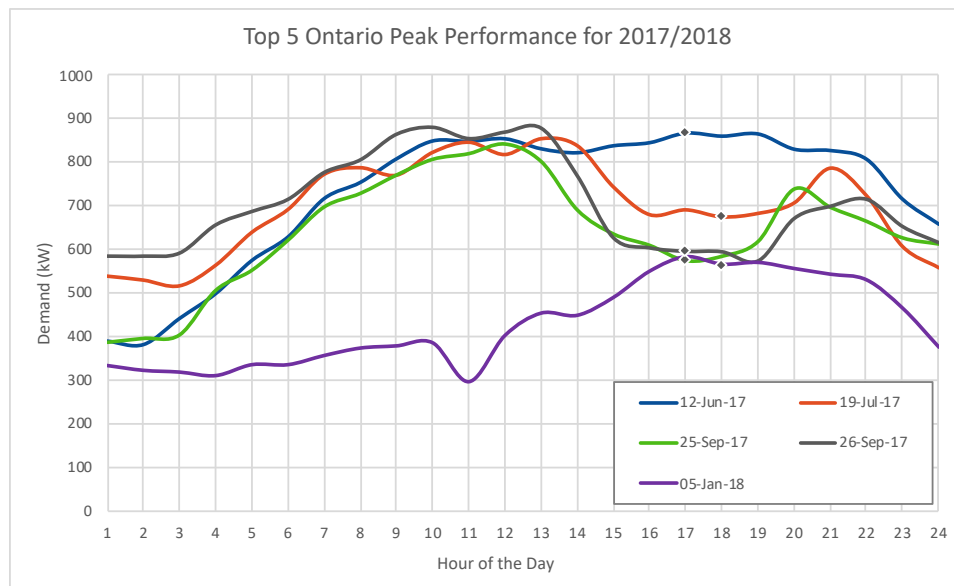
### Class A Global Adjustment (2017/2018)

The following summarizes the Class A analysis with peak demand factor (PDF) calculations and top 5 peak performance plots.

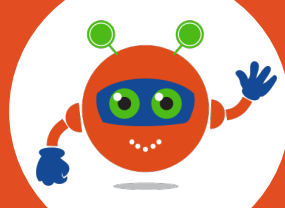
<Client> had a **PDF of 0.000030518** in 2017/2018. Assuming the average Global Adjustment charge of \$1B/month at the time, the annual Class A rate works out to **\$366,221** from July 2018 to June 2019.

Date	Hour Ending	ON Demand (MW)	Facility Demand (kW)
June 12, 2017	17	21,999	867
July 19, 2017	18	20,984	675
September 25, 2017	17	21,812	574
September 26, 2017	17	21,665	595
January 5, 2018	18	20,885	565
		<b>PDF =</b>	<b>0.000030518</b>

The following graph outlines how <Client> performed during the top 5 peaks at the time, with the grey diamonds representing when the actual provincial peak occurred.



In 2017/2018, Class A presented **savings of approximately \$81,406** for the 2018/2019 billing period.



## 2018/2019 Summary

### Class B Global Adjustment (2018/2019)

<Client> consumed **4,372,535 kWh** from April 2018 to March 2019. Applying the Class B rates for each month, the annual Class B cost for <Client> would be **\$398,718**.

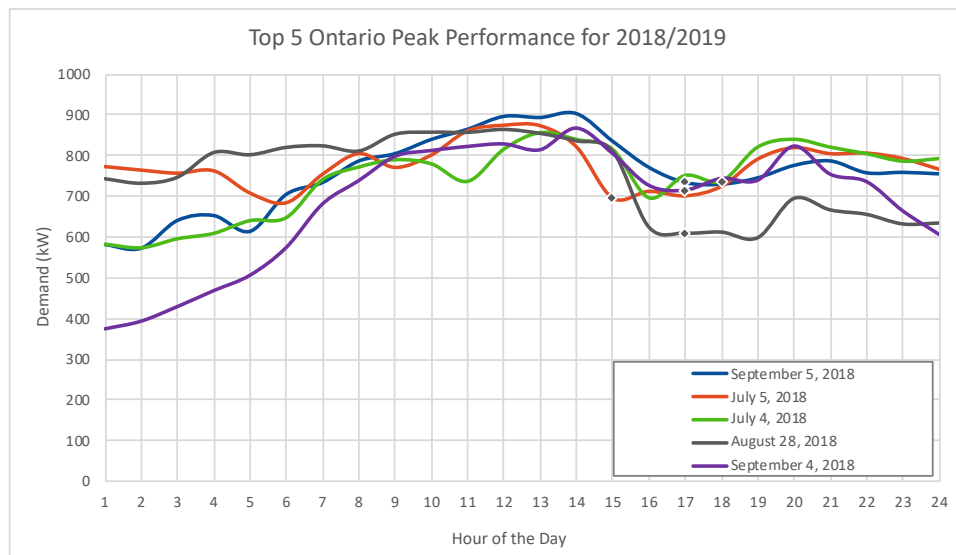
### Class A Global Adjustment (2018/2019)

The following summarizes the Class A analysis with peak demand factor (PDF) calculations and top 5 peak performance plots.

<Client> has an unofficial **PDF of 0.000031727**. Assuming the more recent average Global Adjustment charge of \$950M/month, the annual Class A rate works out to **\$361,689** from July 2019 to June 2020.

Date	Hour Ending	ON Demand (MW)	Facility Demand (kW)
September 5, 2018	17	22,551	736
July 5, 2018	15	22,415	697
July 4, 2018	18	22,123	738
August 28, 2018	17	21,644	609
September 4, 2018	17	21,378	715
		<b>PDF =</b>	<b>0.000031727</b>

The following graph outlines how <Client> performed during the top 5 peaks at the time, with the grey diamonds representing when the actual provincial peak occurred.



In 2018/2019, Class A presents **savings of approximately \$37,030** for the 2019/2020 billing period.